

Repair Guide



Amantii
Electric Fireplaces

Contents

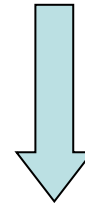
- Replacing the LED light
- Replacing the flicker motor
- Replacing the heating element
- Replacing the PCB board
- Replacing the signal receiver

Replacing the LED lights

Step 1



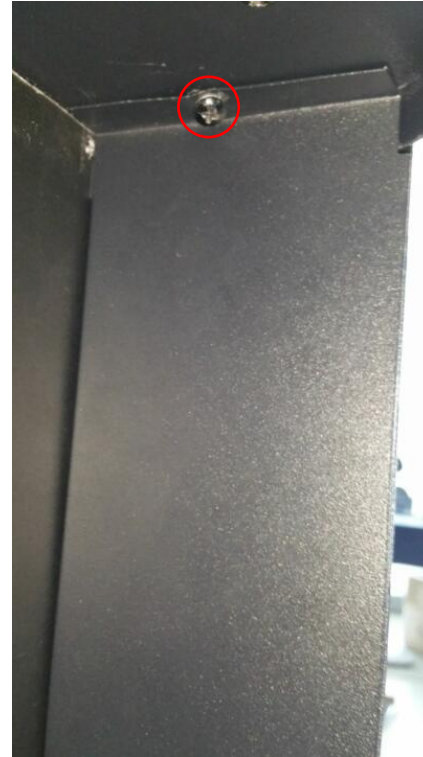
To remove the front glass panel,
hold tightly and push upwards



Step 2



Unscrew the two screws on the top of each side (red dots) to remove inner side panels and ember bed glass panel



Left



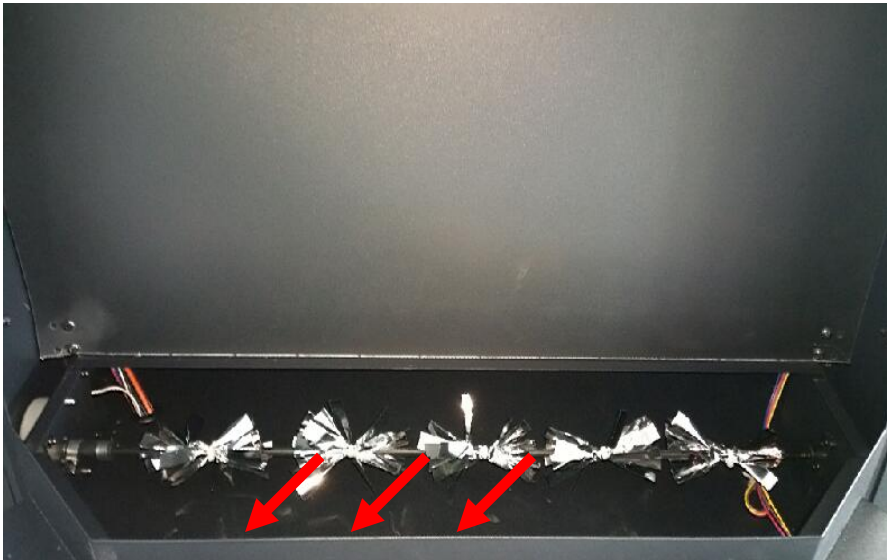
Right

Remove screws → remove side panels → remove ember bed glass panel



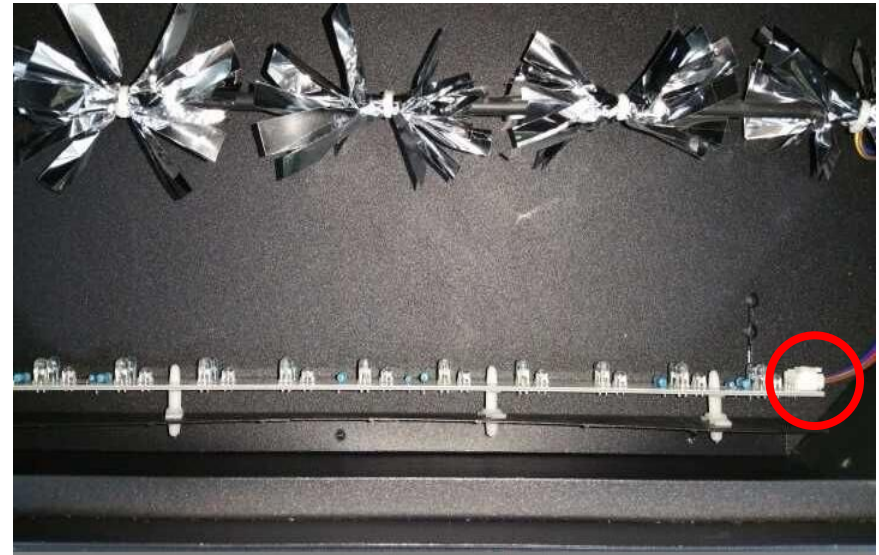
Step 3

Replacing the ember bed LED lights



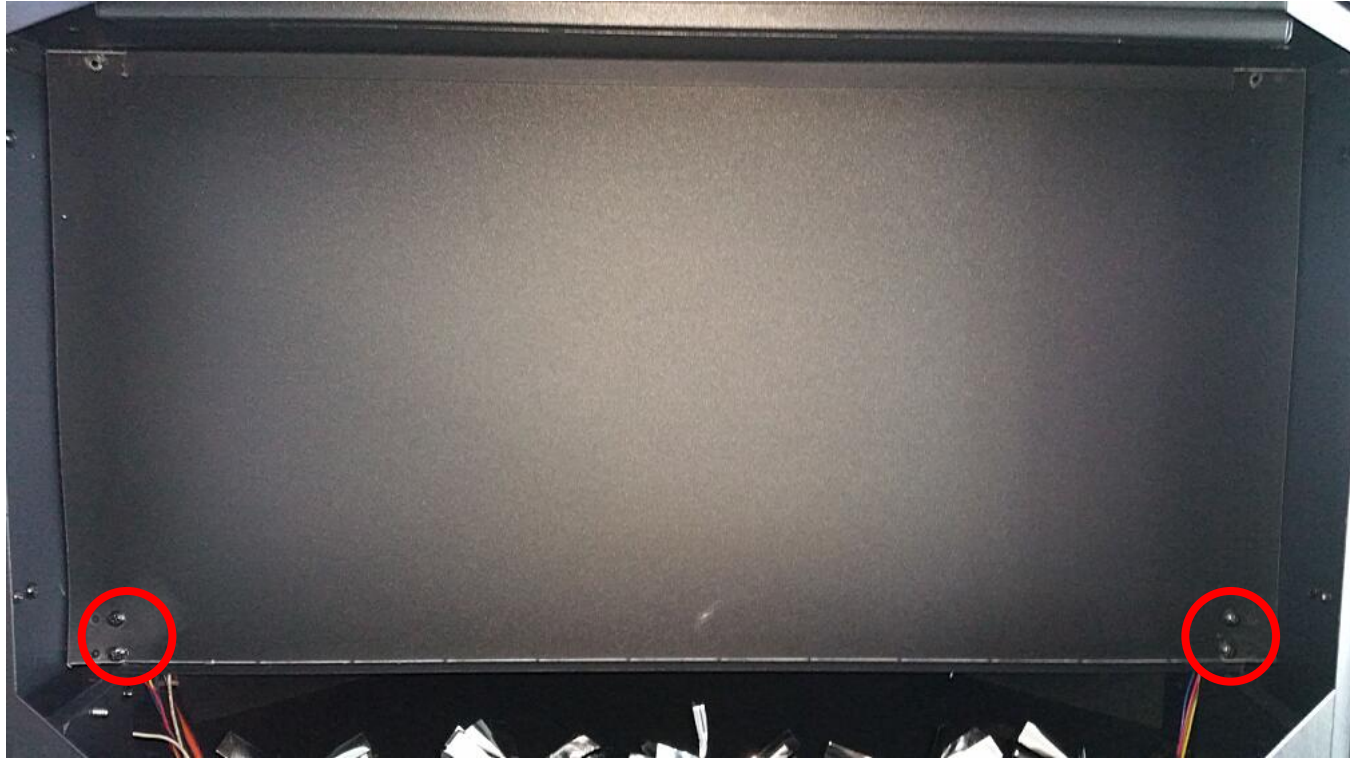
Ember bed LED lights are located here

To change flame light, see step 4

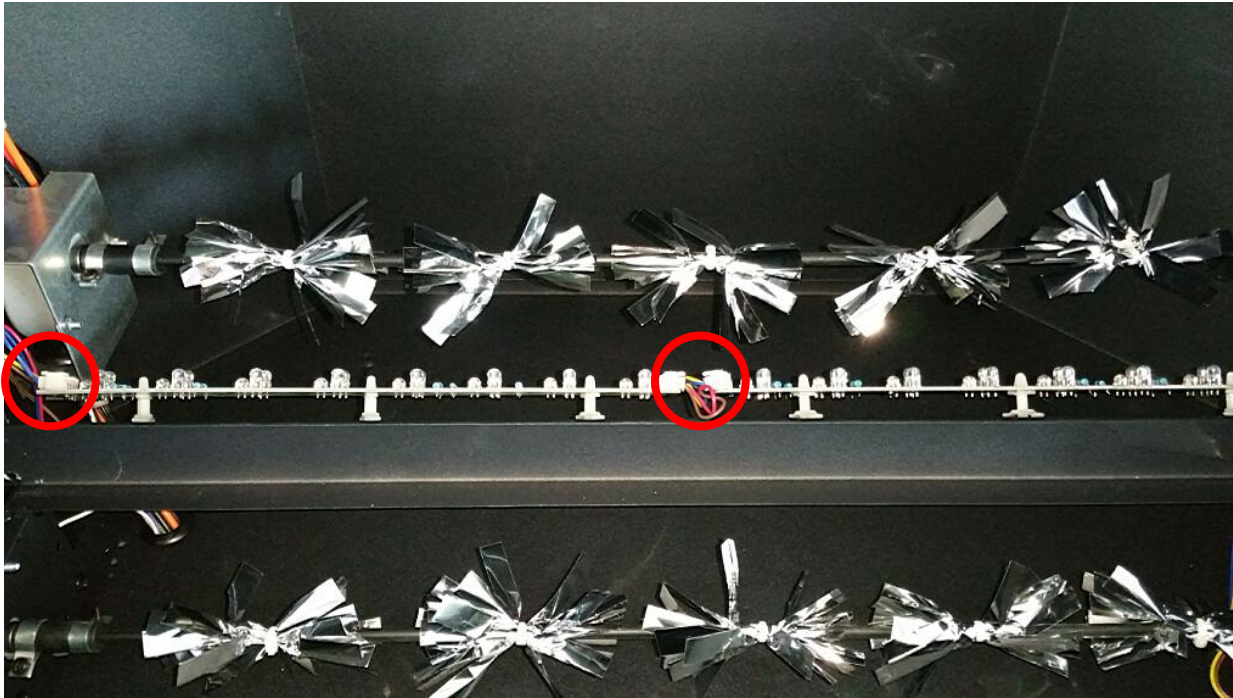


Unplug the red circled socket and remove the old LED light with a new one

Step 4



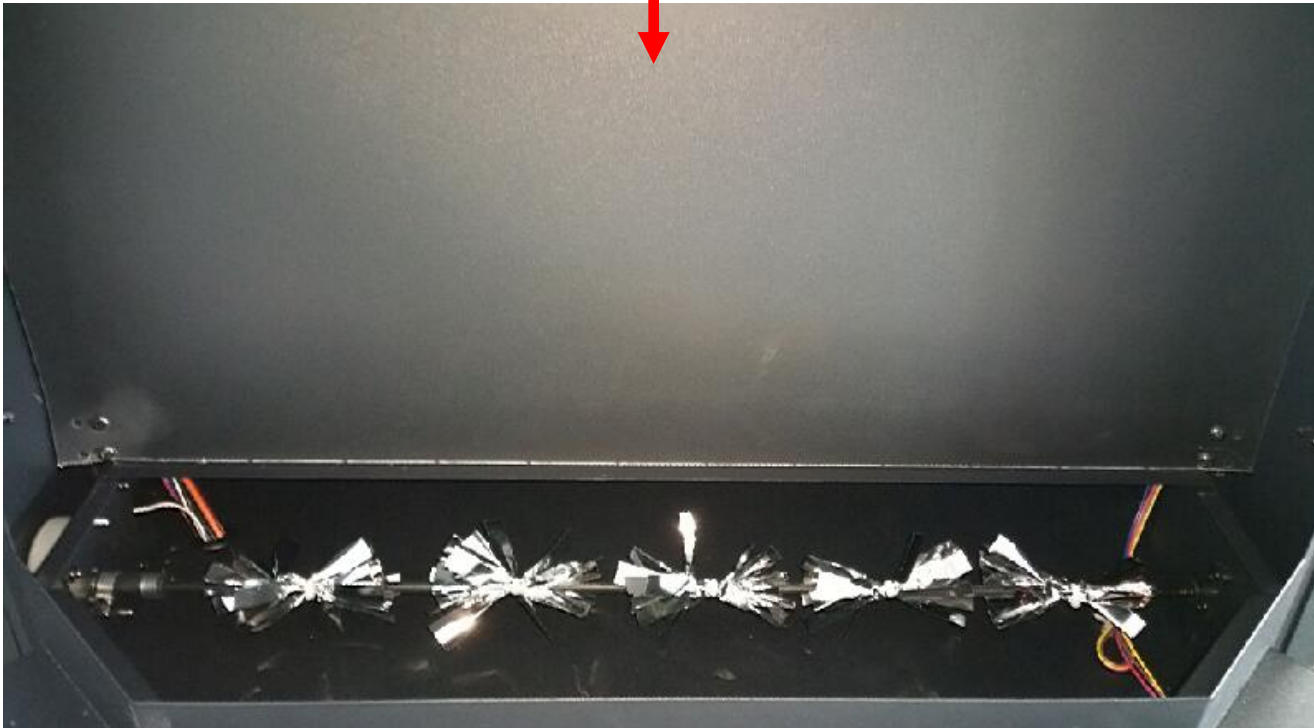
Unscrew the 4 screws on both sides (circled in red) to remove the plastic board



Now you can replace the flame light.

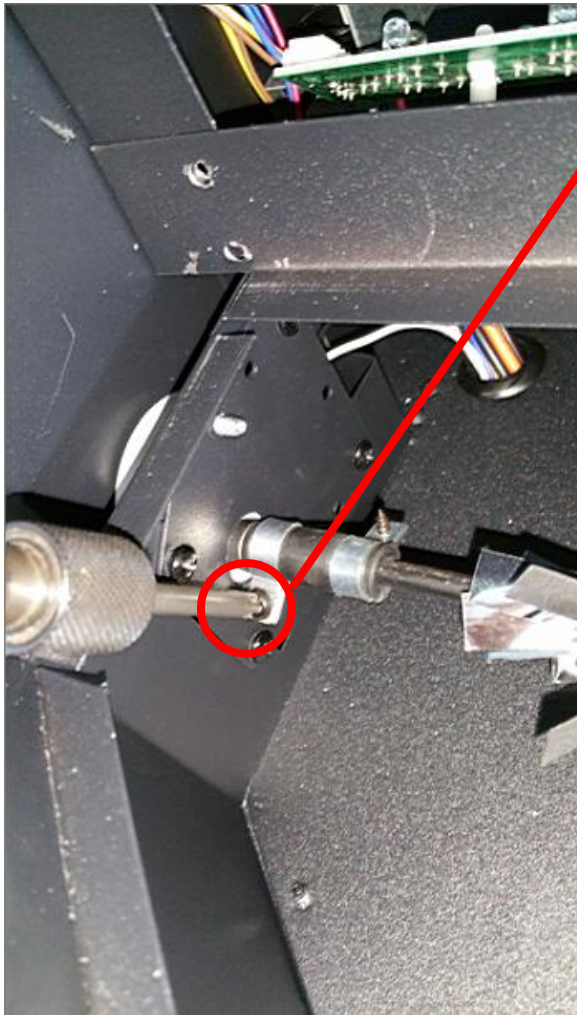
Replacing the flicker motor

Please follow Steps 1 & 2 from the replacing the LED lights section to arrive here



Replacing the ember bed flicker motor

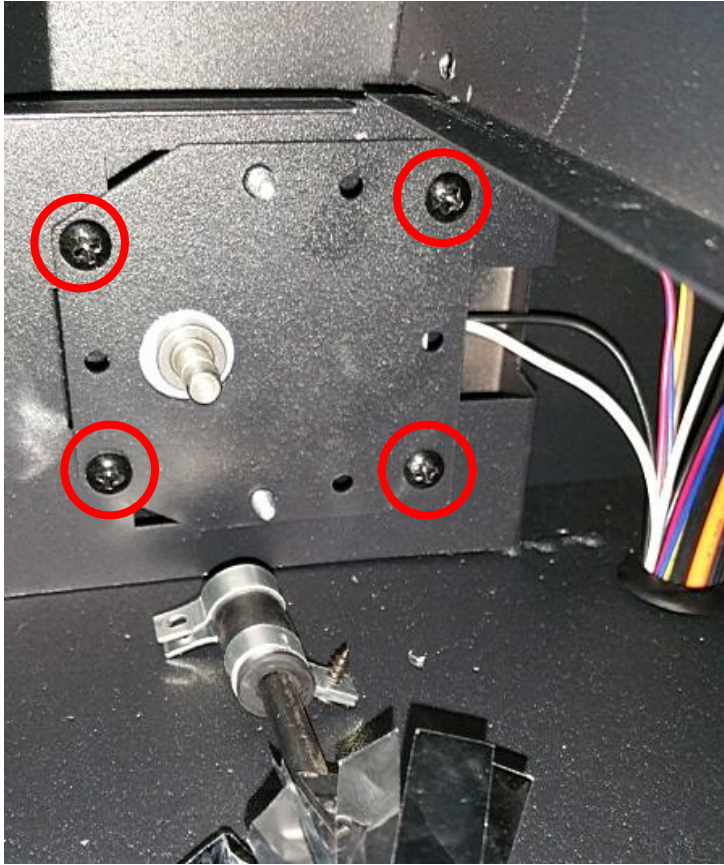
Step 1



Unscrew the screw to separate
the motor and the flicker rod



Step 2



Unscrew the four screws circled
In red to remove the motor

Now you can change the motor

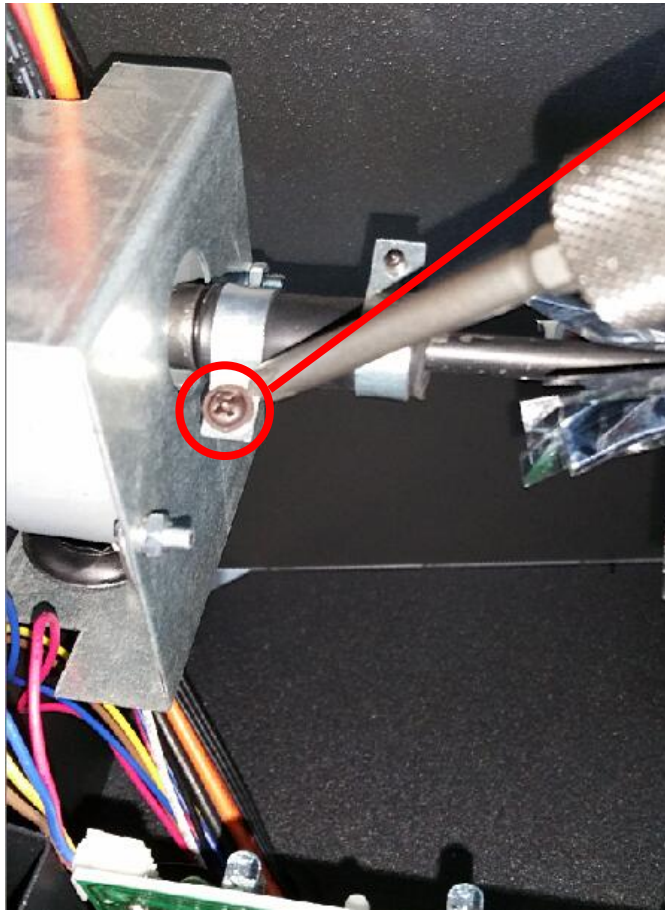
Replacing the flame effect flicker motor

Step 1

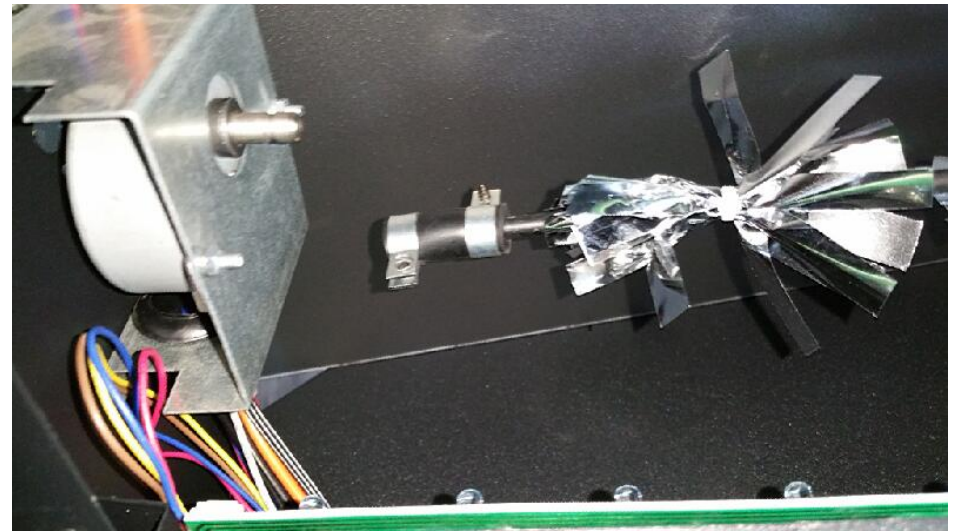


Unscrew 4 screws on both sides (circled in red) to remove the plastic board

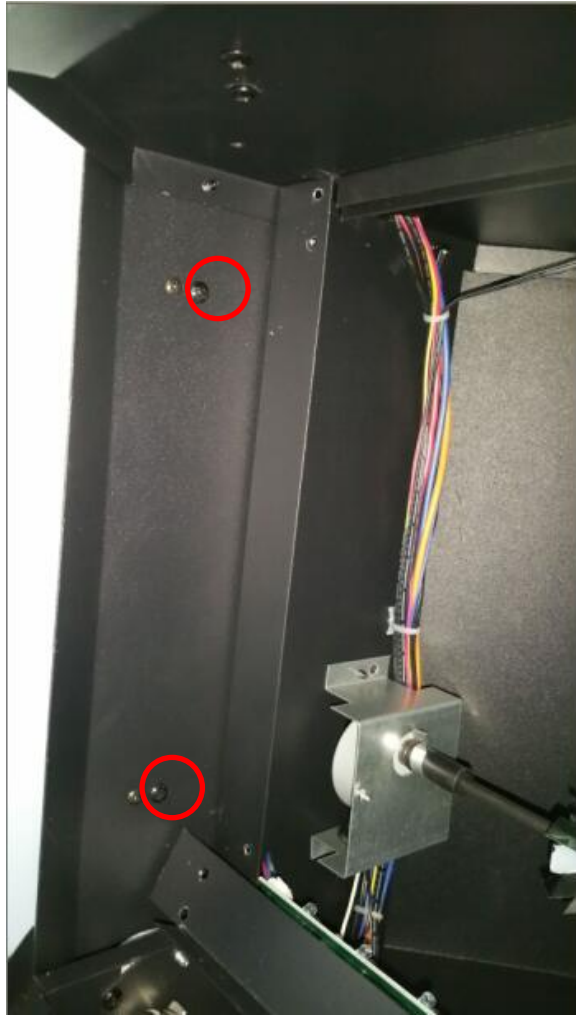
Step 2



Unscrew the screw to separate the motor and flicker rod



Step 3



Right

Unscrew the four screws
on both side(circled in red,
the larger ones)

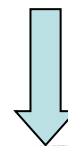


Left

Step 4



Unscrew the six screws circled in left picture, then you can remove the main body cover



Step 5

Unscrew the screws to remove the flame effect flicker motor



Replacing the heating element

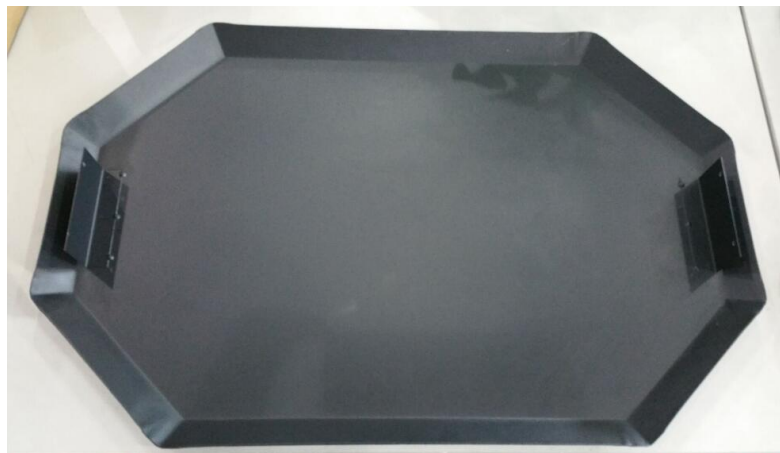
Please follow steps 1& 2 from replacing the LED light, and steps 3 & 4 in replacing the flame effect flicker motor

Step 1 Remove the upper cover



Right

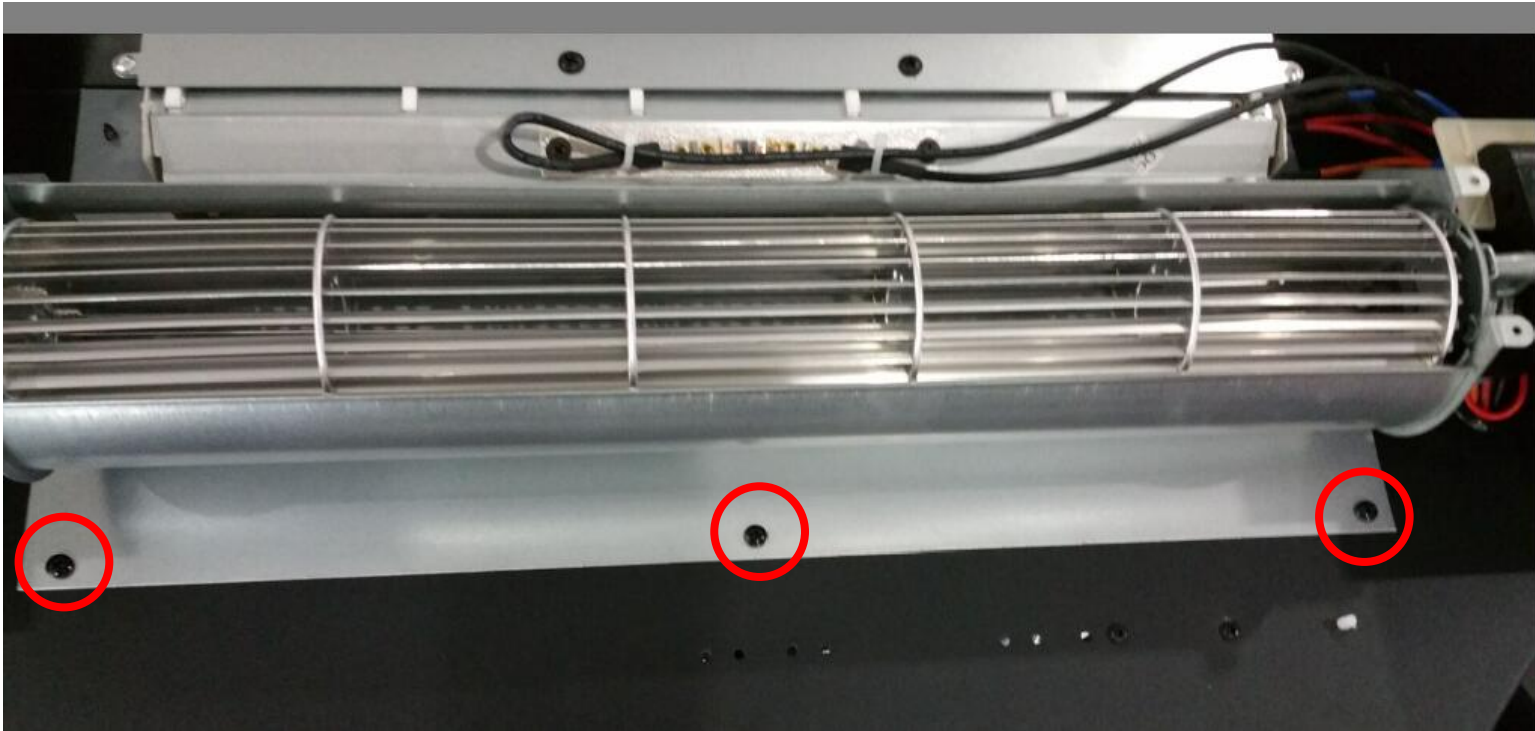
Unscrew the four screws circled in pictures, on right and left sides of the fireplace body, to remove upper cover



Left

Step 2

After the upper cover has been removed, you can see heating element (as shown below). Unscrew 3 screws.



Step 3

In order to remove the heating element, unscrew 4 additional screws that are beneath the heating element and opposite to the three screws you removed at step 2



In detail



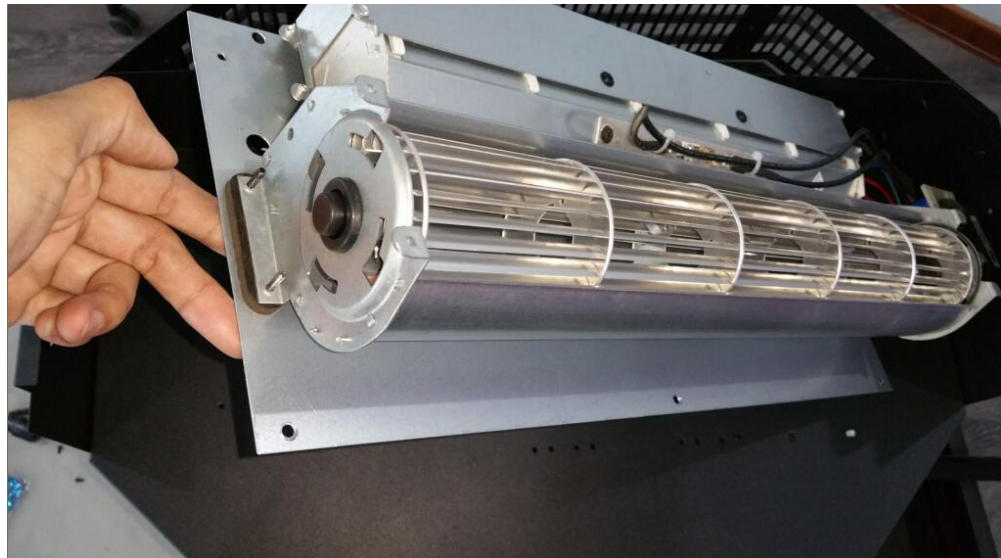
Right



Left

Step 4

Unplug the heating element to remove it



Replacing the PCB board

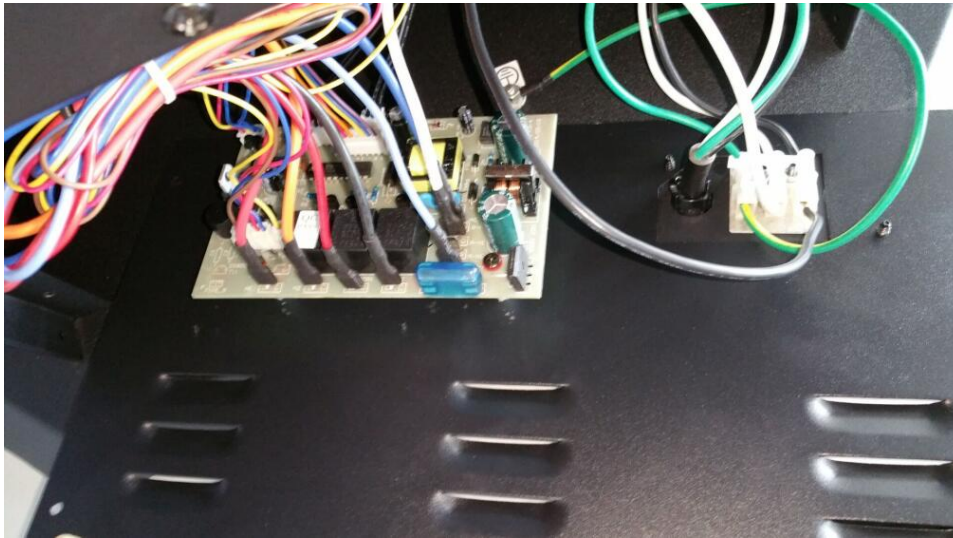
Step 1



Unscrew 4 screws where arrows are marked

Zoomed view





Step 2

The PCB board is fixed on the metal cover. Unscrew the 4 screws at the 4 corners on the PCB board and unplug all the wiring, replace it with a new one.

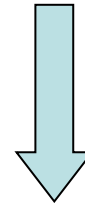


Replacing the signal receiver

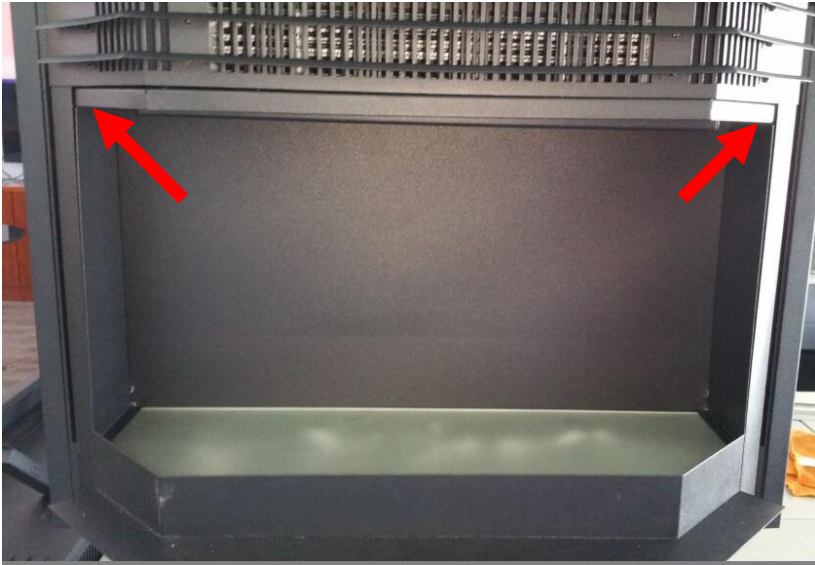
Step 1



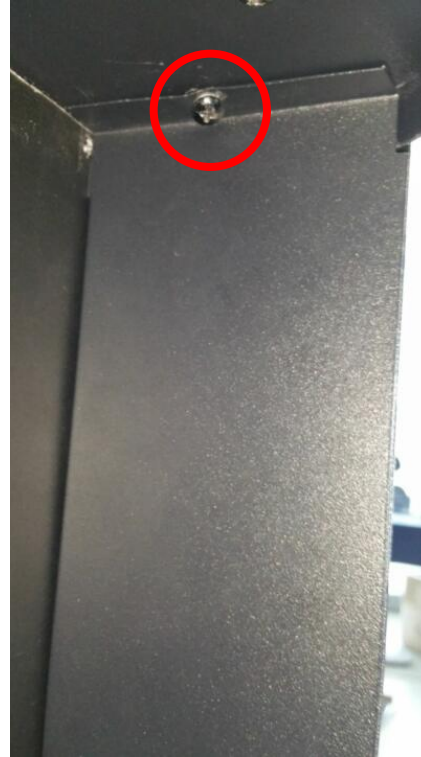
To remove the front glass panel,
hold tightly and push upwards



Step 2



Unscrew two screws on the top of each side (where arrows are marked) to remove inner side panels

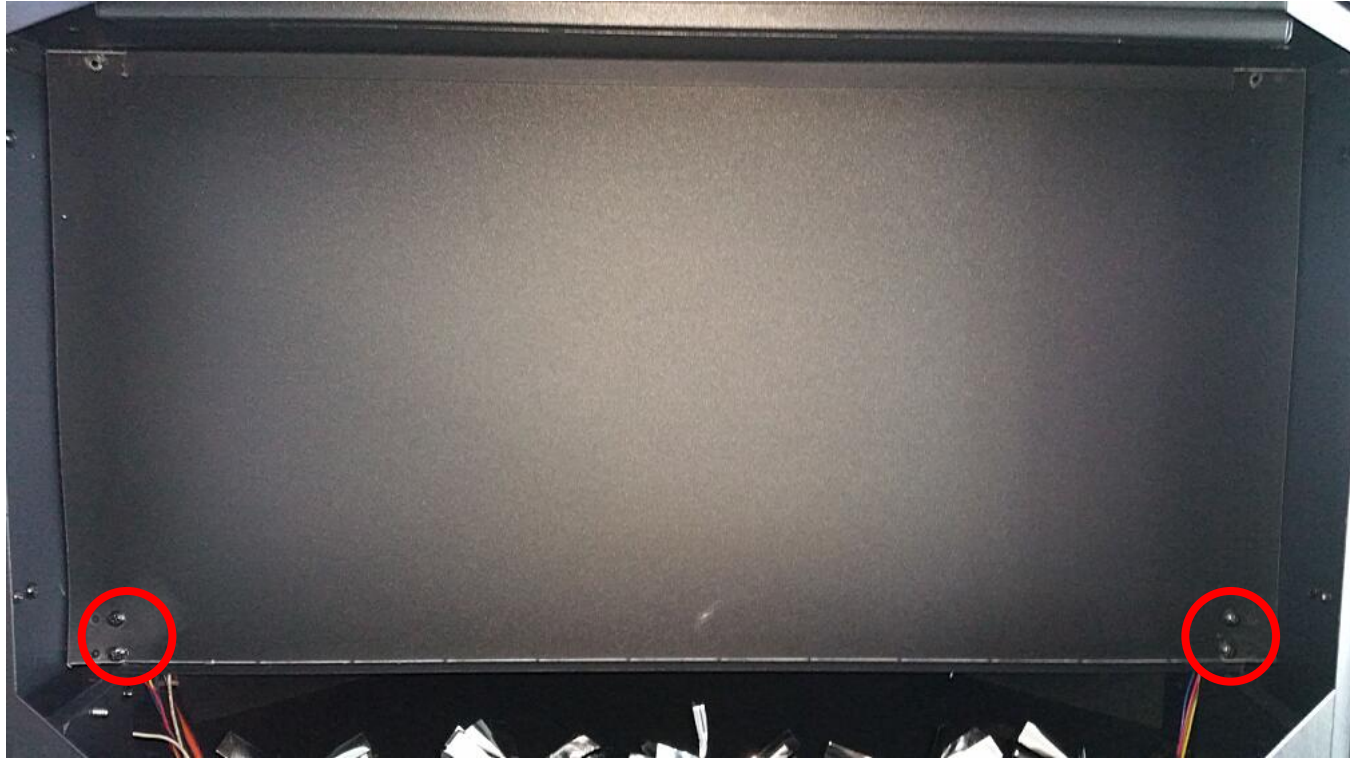


Left



Right

Step 3



Unscrew 4 screws on both sides (circled in red) to remove the plastic board

Step 4

After the plastic board is removed, you can see the signal receiver. Unscrew two screws to replace the signal receiver

